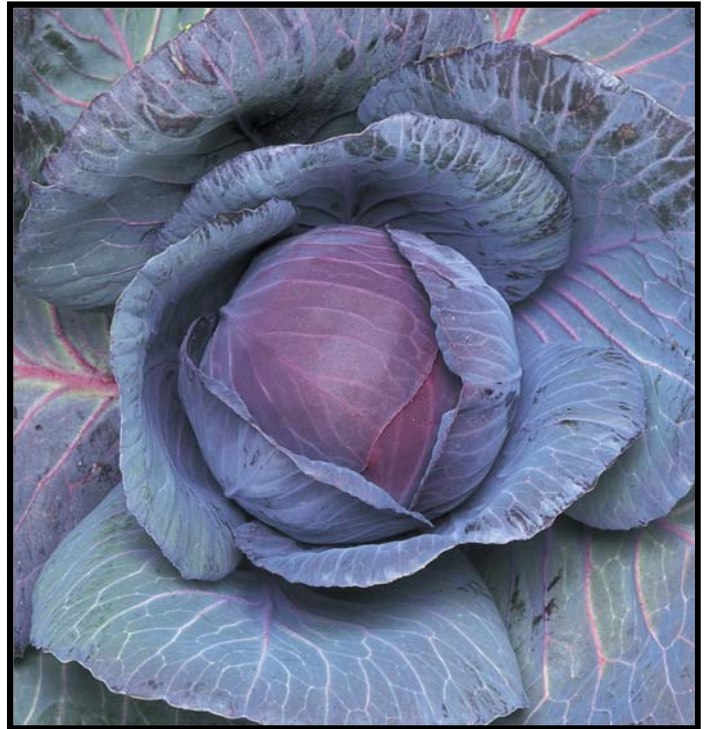




Hybrid Cabbage Ruby Queen



DESCRIPTION: Ruby Queen is a medium maturing hybrid. Vigorous plants produce heads that are round and bright purplish-red.

MATURITY: Medium, 75 to 80 days from transplant

VARIETY CHARACTERISTICS: Plants are upright with intermediate resistance to Black Rot. Very good tolerance to both heat and cold. Recommended harvest is fall to winter.

FEATURES

- Excellent uniformity
- Strong tolerance to heat and cold
- Good weight

BENEFITS

- Reduced harvest labor costs
- Wide adaptability
- High yield potential

Descriptions, illustrations, photos and disease resistance, etc. are based upon the results obtained under favorable conditions and certain races of pathogens/diseases. Identical results are not guaranteed nor implied for all growing conditions. Information is based on average data compiled. Physical characteristics, adaptability and disease tolerance may vary under different conditions. Rev B

